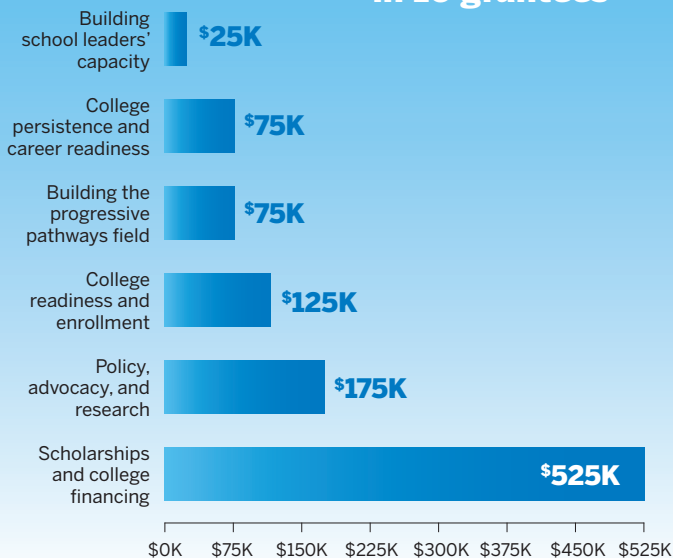


# CME Group Foundation's 2019–2020 College and Career Success Portfolio

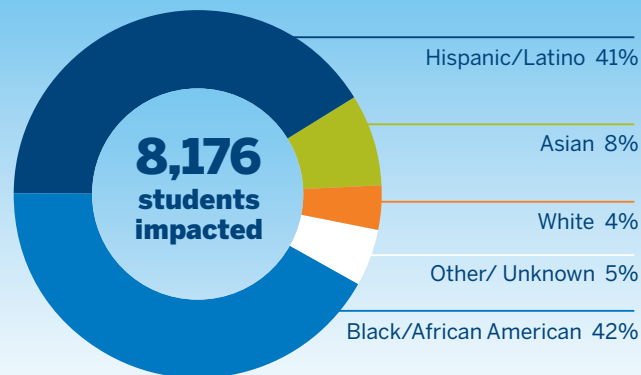
The Foundation's College and Career Success grantees work with Chicago's low-income and minority students to ensure they enroll and succeed in post-secondary education and transition to strong first jobs. The foundation also supports research and policy organizations whose work advances post-secondary and career success.

## Our investment this school year

**\$1,000,000** invested in 16 grantees



## Our grantee impact



Female 62%

Male 38%

## Student and school outcomes

Of the students our grantees impacted this year:

**82%** enrolled in college  
(3,982 high school students)

**89%** persisted in college  
(2,096 college students)

**546** college students graduated on time

29 students received  
**\$467,490** in scholarships

**386** students participated in internships and apprenticeships

Grantees forged **59** new corporate and industry partnerships that offer students job experience or mentorship opportunities

**135** high school counselors and college career coaches received professional development that will help them create strong college-going cultures in their schools

## Policy advocacy and research progress



**Advance Illinois** demonstrated that transitional math courses increase

college readiness for high school seniors and reduce the likelihood of remediation in college. As a result, **the Illinois' State Board of Education and Community College Board adopted a statewide plan for all school districts to implement transitional math courses by the 2021–2022 school year.**



**Empower Illinois**

commissioned a study on the state's workforce education pathways, which informed the **Future of Illinois bill** that ensures students' income does not limit their education and career paths. Empower Illinois partnered with a coalition of nonpublic schools, trade labor unions, businesses, and community organizations to make the bill visible to reporters, advocates, and candidates. Though COVID response bills currently take precedence, **these efforts have built a strong foundation and constituency for reintroducing the bill in the future.**



In October 2018, the **Partnership for College**

**Completion** launched the Illinois Equity in Attainment Initiative. It supports education partners via equity summits, in-depth training for leaders, and ongoing coaching. **21 participating universities and community colleges published public equity plans** this year.

Data sources: Arabella Advisors compiled this dashboard using data provided by the CME Group Foundation's 16 College and Career success grantees in August 2020. For questions, contact alexandra.bass@arabellaadvisors.com.